

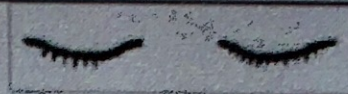





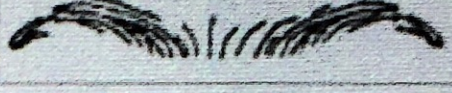














Trait	Dominant (both heads)	Hybrid (one head, one tail)	Recessive (both tails)
Length of Eyelashes	 Long (LL)	 Long (Ll)	 Short (ll)
Shape of Eyebrows	 Bushy (BB)	 Bushy (Bb)	 Thin (bb)
Position of Eyebrows	 Not connected (NN)	 Not connected (Nn)	 Connected (nn)
Size of Nose	 Large (NN)	 Medium (Nn)	 Small (nn)
Shape of Lips	 Thick (TT)	 Medium (Tt)	 Thin (tt)
Size of Mouth	 Large (LL)	 Medium (Ll)	 Small (ll)
Size of Ears			

HUMAN GENETIC TRAITS

Color & BW • 19 Diagrams

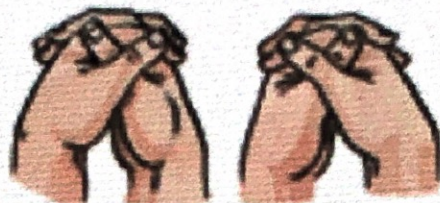




Widow's peak or not?



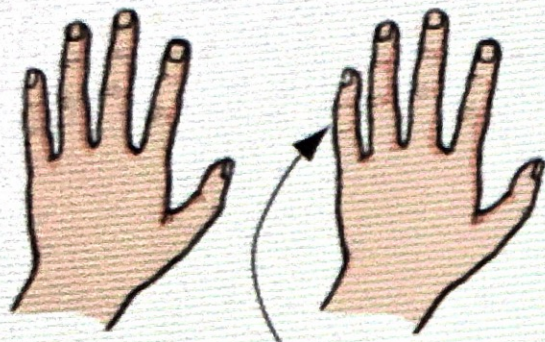
Can roll the tongue or not?



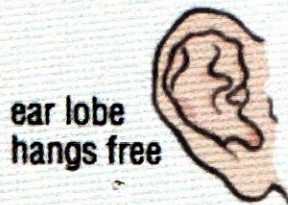
Which thumb is on the top?



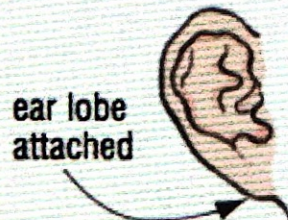
Length of second toe?
Is it longer than your big toe or not?



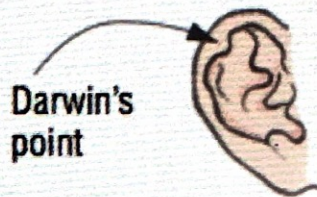
Little finger straight or crooked?



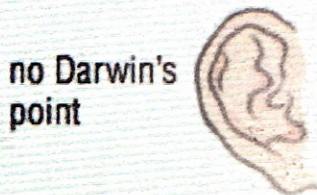
ear lobe hangs free



ear lobe attached



Darwin's point



no Darwin's point

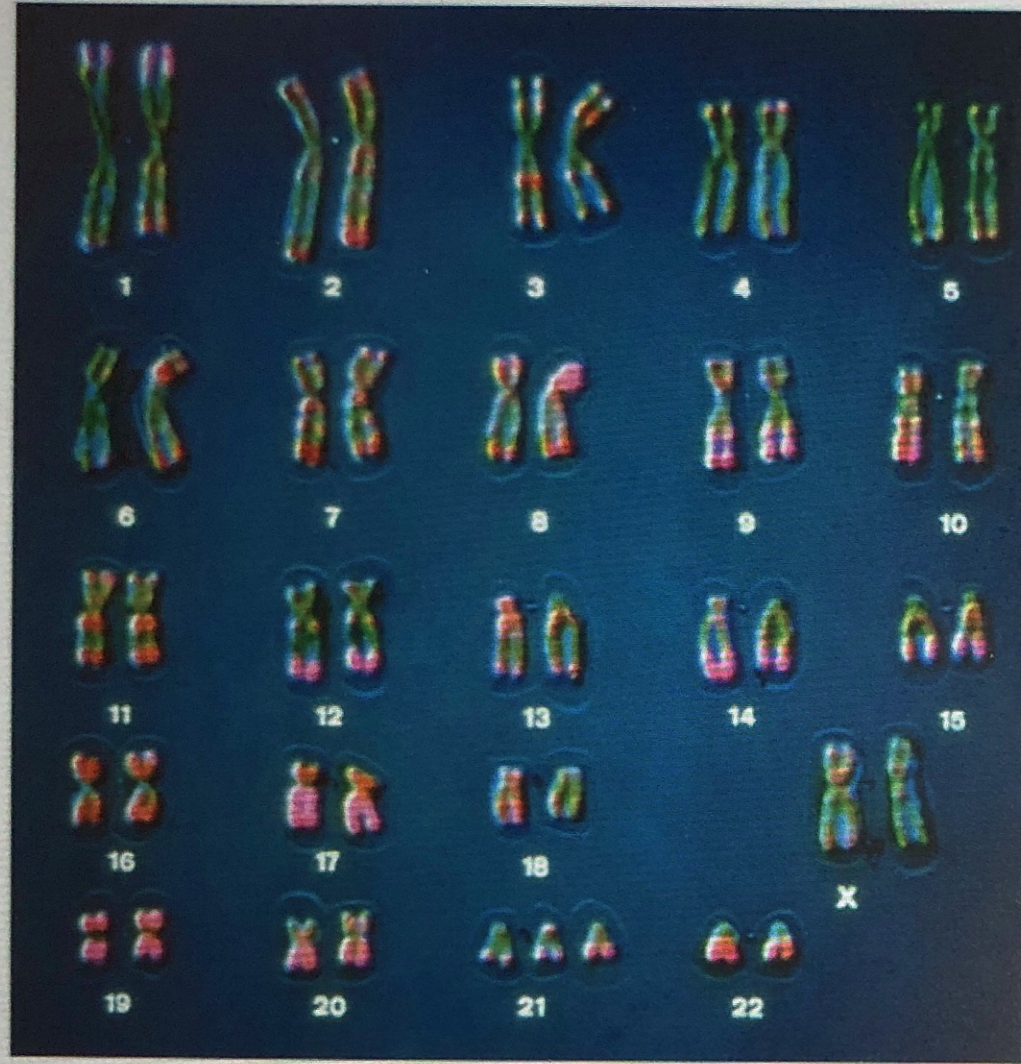


front teeth close together



front teeth with a definite gap

Karyotypes with Magnets



Karyotypes with Magnets

LAB 3 Genetics

17-3836

Classroom Demonstration Set

17-3837

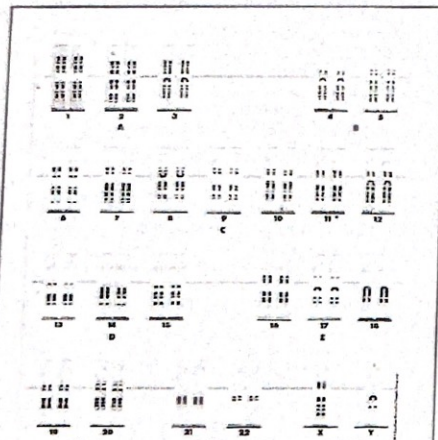
Eight-Station Kit

17-3839

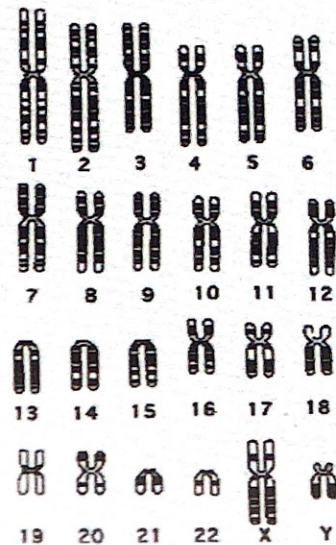
One-Station Kit

Karyotyping with Magnetic Chromosomes

TEACHER'S MANUAL WITH STUDENT GUIDE



Human male karyotype



The karyotype of the human female contains 23 pairs of homologous chromosomes:

22 pairs of autosomes

Human Blood Types

if your blood type is . . .

Type	You Can Give Blood To	You Can Receive Blood From
A+	A+ AB+	A+ A- O+ O-
O+	O+ A+ B+ AB+	O+ O-
B+	B+ AB+	B+ B- O+ O-
AB+	AB+	Everyone
A-	A+ A- AB+ AB-	A- O-
O-	Everyone	O-
B-	B+ B- AB+ AB-	B- O-

if your blood type is . . .

Type	You Can Give Blood To	You Can Receive Blood From
A+	A+ AB+	A+ A- O+ O-
O+	O+ A+ B+ AB+	O+ O-
B+	B+ AB+	B+ B- O+ O-
AB+	AB+	Everyone
A-	A+ A- AB+ AB-	A- O-
O-	Everyone	O-
B-	B+ B- AB+ AB-	B- O-
AB-	AB+ AB-	AB- A- B- O-



Human Blood Types

Patient	Anti A	Anti B	Anti Rh	Blood Type
s	A	B	Rh	
1	+	-	-	A-
2	plus	neg	neg	A-
3	neg	neg	neg	O-
4	neg	neg	neg	O-

Analyzing Corn Kernels



© U of M 2005 (J. France)

Analyzing Corn Kernels

	Observed	Expected	X ²
Black Smooth			
Black wrinkled			
Yellow Smooth			
Yellow wrinkled			